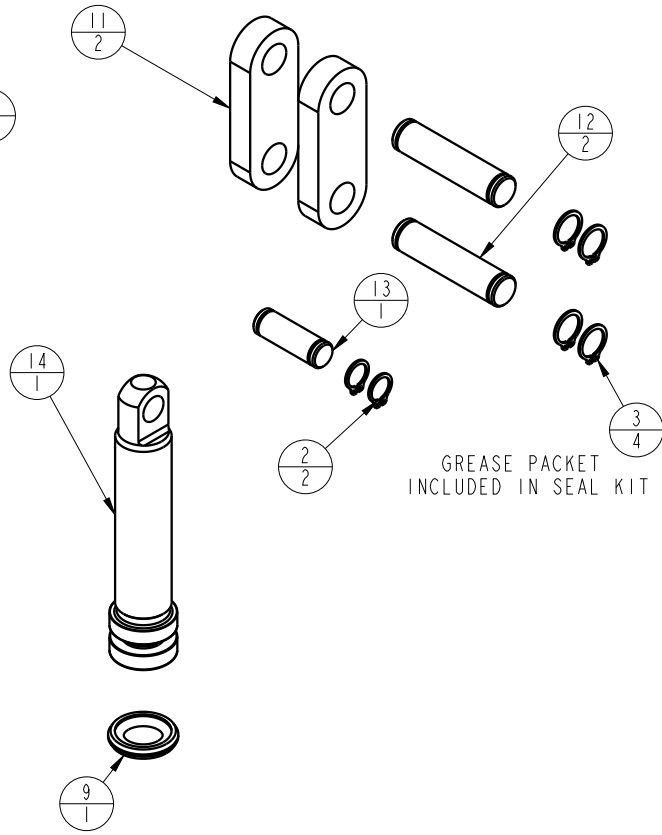
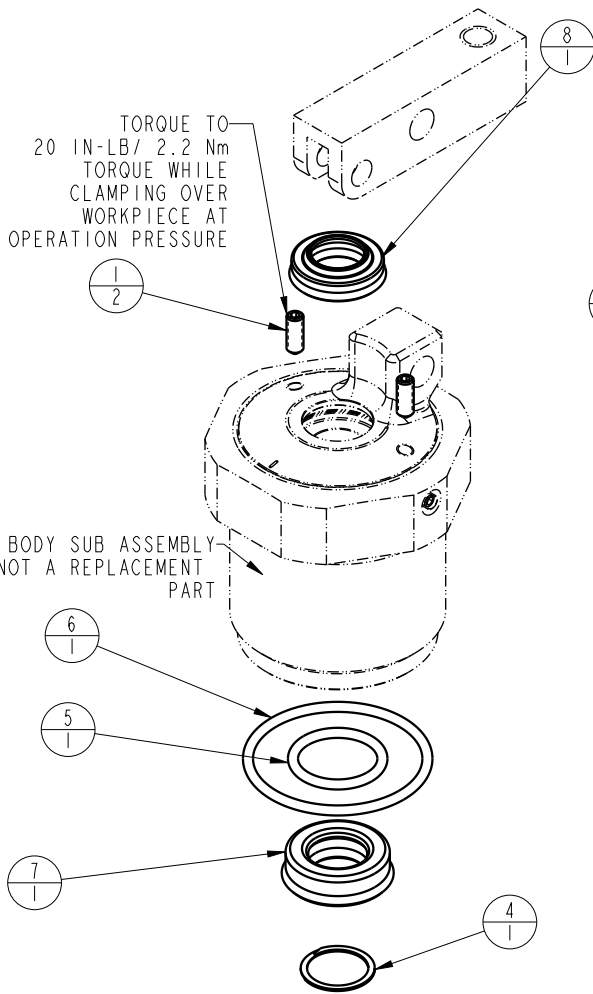


NO	QTY	PART NO	DESCRIPTION	STD SEAL KIT
1	2	21500316	SCREW, SET, CUP PT, M3 X .5 X 8	
2	2	23050031	RING, RTNG, EXT, 0.197	X
3	4	23050032	RING, RTNG, EXT, 0.236	X
4	1	23050049	RETAINING RING, SPIRAL, INTL	X
5	1	39050037	O-RING, (-015)	X
6	1	39051125	O-RING, (-025)	X
7	1	39052058	SEAL, ROD, RSD, 10, 85A, AU	X
8	1	39053039	SEAL, WIPER, SNAP IN, WED, 10, 94A, AU	X
9	1	39056030	SEAL, CAP, PISTON, 12, 94A, AU	X
10	1	67040076	TAG, LINKAGE ASSY, LC, TL360	
11	2	81600145	LINK, LC, 7MPa, 25B	
12	2	81600150	PIN, LINK, LC, 7MPa, 25B	
13	1	81600155	PIN, PLUNGER, LC, 7MPa, 25B	
14	1	81600250	PLUNGER, LC, TL360, DA, 600/2.73kN	
N/A	N/A	60160215	KIT, SEAL, LC, TL360, DA, 6001b	NOTED



PARTS LIST		
	VEKTEK, INC. 1334 E. SIXTH AVE. P.O. BOX 625 EMPORIA, KS. 66801 U.S.A.	
ASSEMBLIES AFFECTED	PARTS LIST, ASSY, LC, CM, TL360, DA, 6001b	
16421200	ROTARY LUG	
SIZE A	PL1625	REV A

A	5122	RELEASE	BDC	6/11/24
REV	IN ACCORDANCE WITH ECN	EFFECTIVE DATE	REVISED BY	DATE
DRW BY: BDC	DRAWING STATUS: Released			
DATE: 6/28/23	PRODUCTION APPROVED FOR RELEASED STATUS ONLY			